

FOR SALE

101 JOHNSON ROAD BERTRAM, WA



CURRENT DA APPROVAL FOR 34 RESIDENTIAL UNITS

- Located in this Established Residential Estate, the site is located directly opposite Beeliam Regional Park, within walking distance to the Kwinana Train and Bus Station and only 2 minutes to the Kwinana Freeway System.



101 Johnson Road Bertram, WA

LOCATION

The site is located on Johnson Road in close proximity to major transport links including Perth to Mandurah railway (Kwinana Station) and Kwinana Freeway. The property is also well located in close proximity to the Bertram Town Centre with easy access to Childcare facilities, schools and community facilities.

SITE DETAILS

The property comprises a single titled parcel of land with an area of 4,069m², with frontage to Johnson Road of approximately 67 metres.

TITLE DETAILS

Lot 3 on Deposited Plan 61386 contained in Certificate of Title Volume 2715 Folio 68.

IMPROVEMENTS

The site is presently vacant land.

ZONING

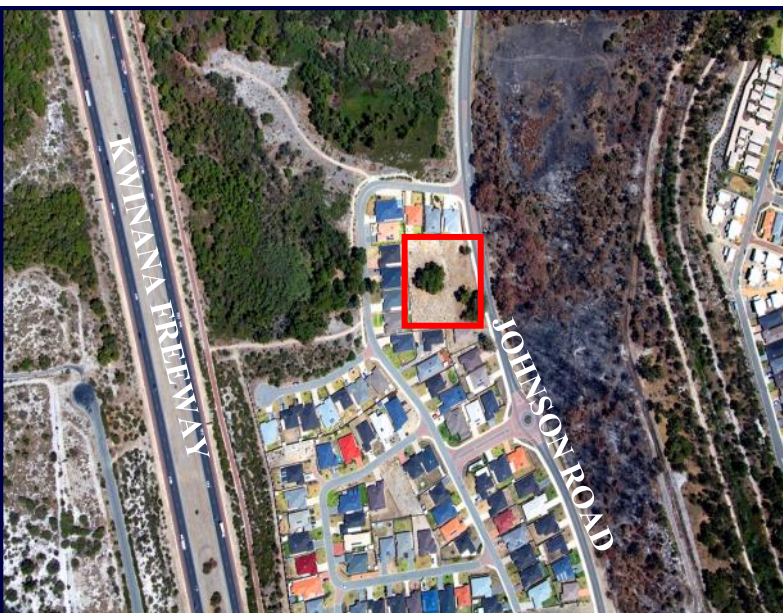
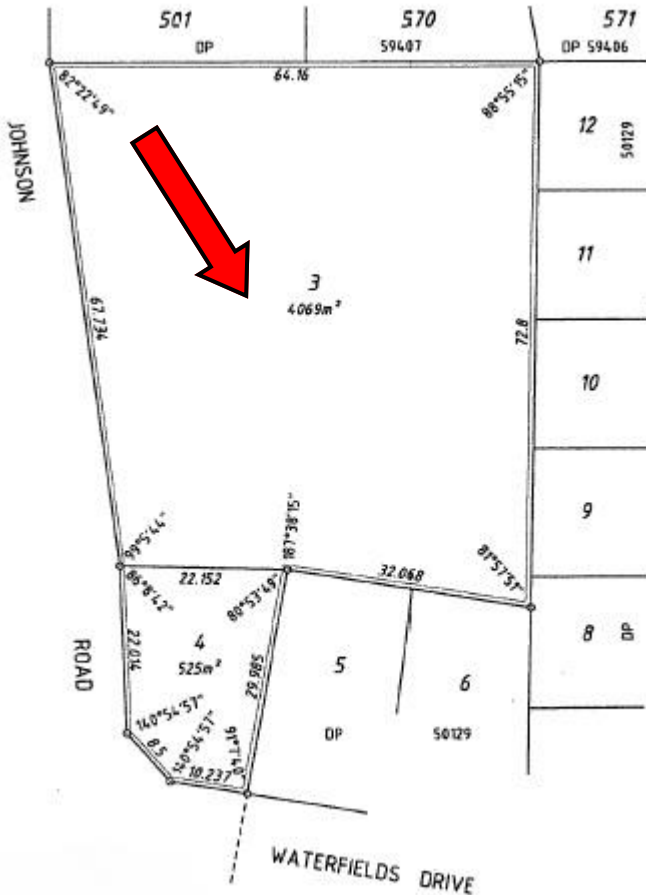
The property is zoned "R40" in accordance with the City of Kwinana Town Planning Scheme No.2.

DEVELOPMENT APPROVAL

A Development Approval for 34 multiple dwellings has been approved by the City of Kwinana. A copy of the approval is available upon request.

ASKING PRICE

\$1,950,000 plus GST.



Contact Details

Barrie Glossop 0412 918 740
Office 61 8 6389 2242
Fax 61 8 6389 2243
Email bglossop@bpga.com.au

Jeff Braddock 0412 934 694
Office 61 8 6389 2242
Fax 61 8 6389 2243
Email jbraddock@bpga.com.au

BPG Australia Pty Ltd
Level 1, 43 Stirling Highway
NEDLANDS WA 6009
www.bpga.com.au